



Pava®

UNIVERSITA' DI LUBIANA

SLOVENIA

4.000 m²



DOPO



PRIMA



DOPO



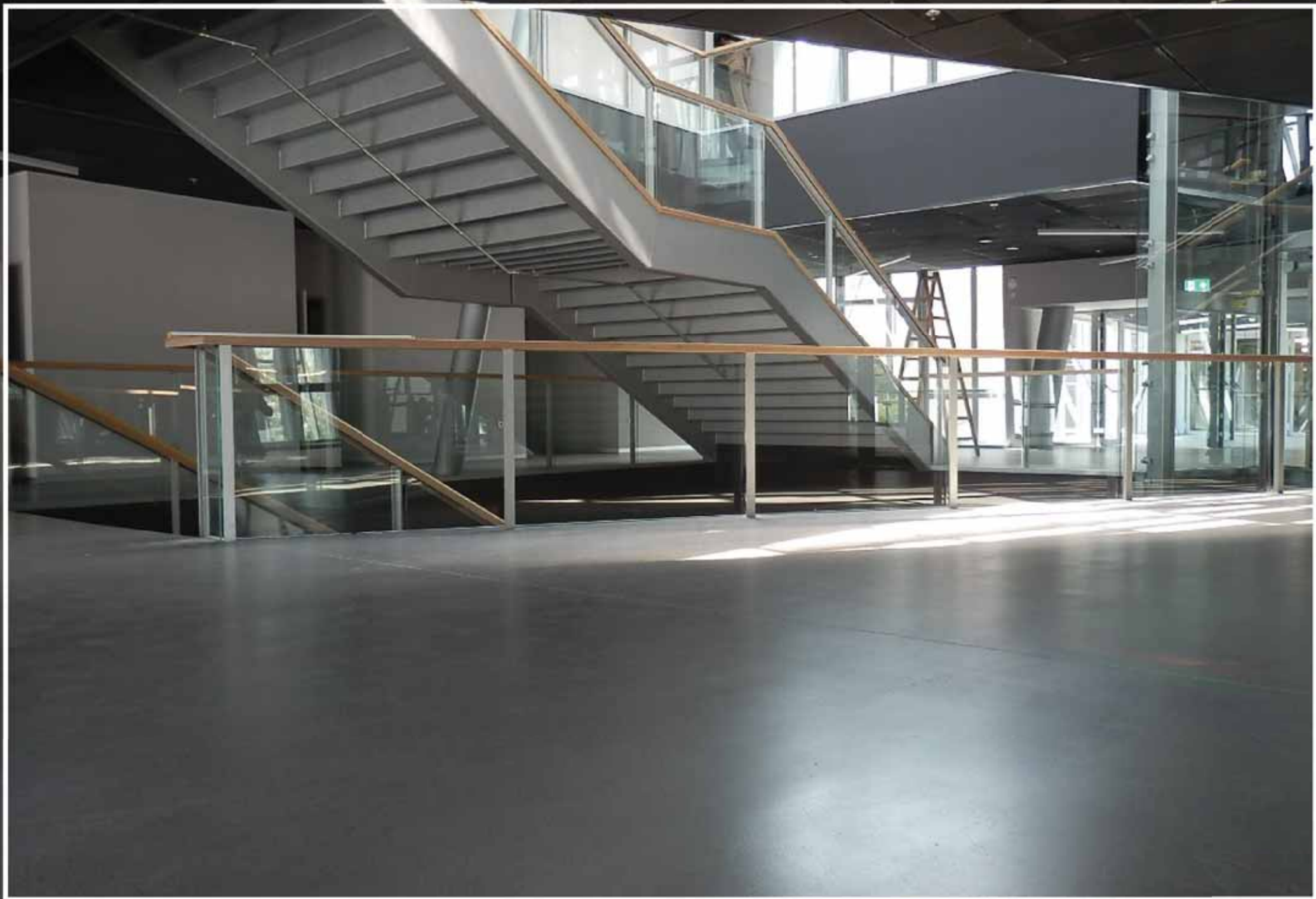
PRIMA



DOPO



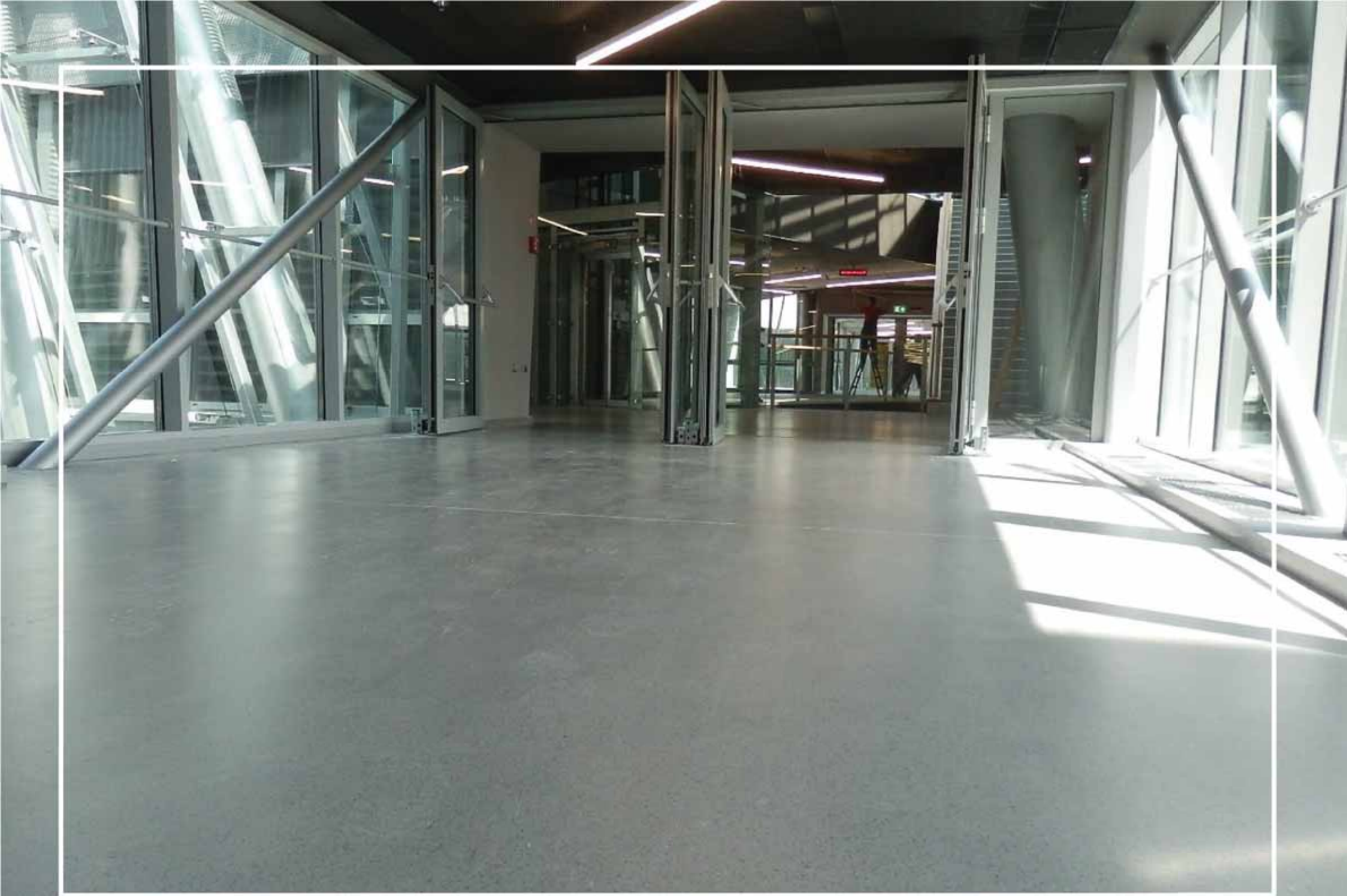
PRIMA



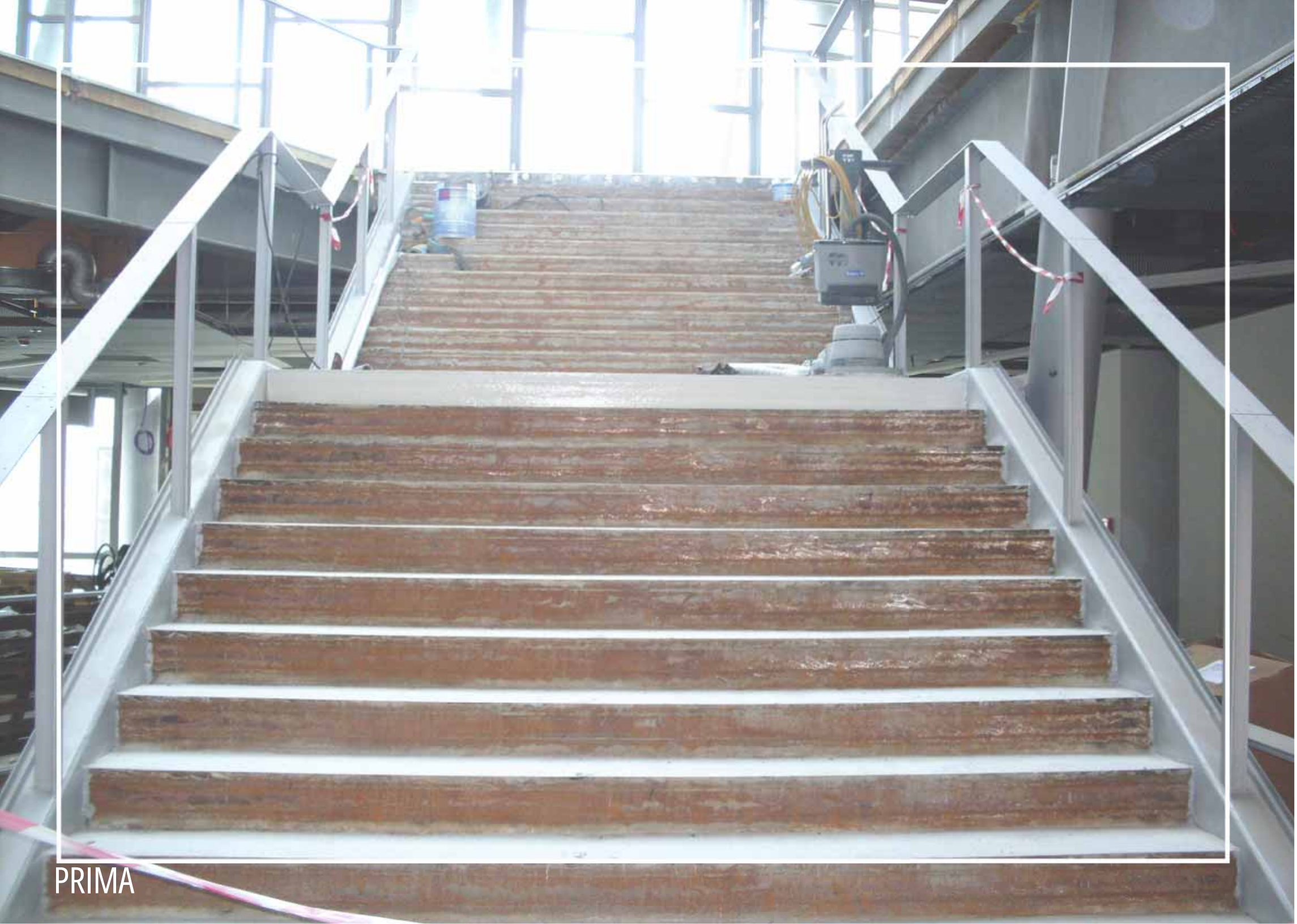
DOPO



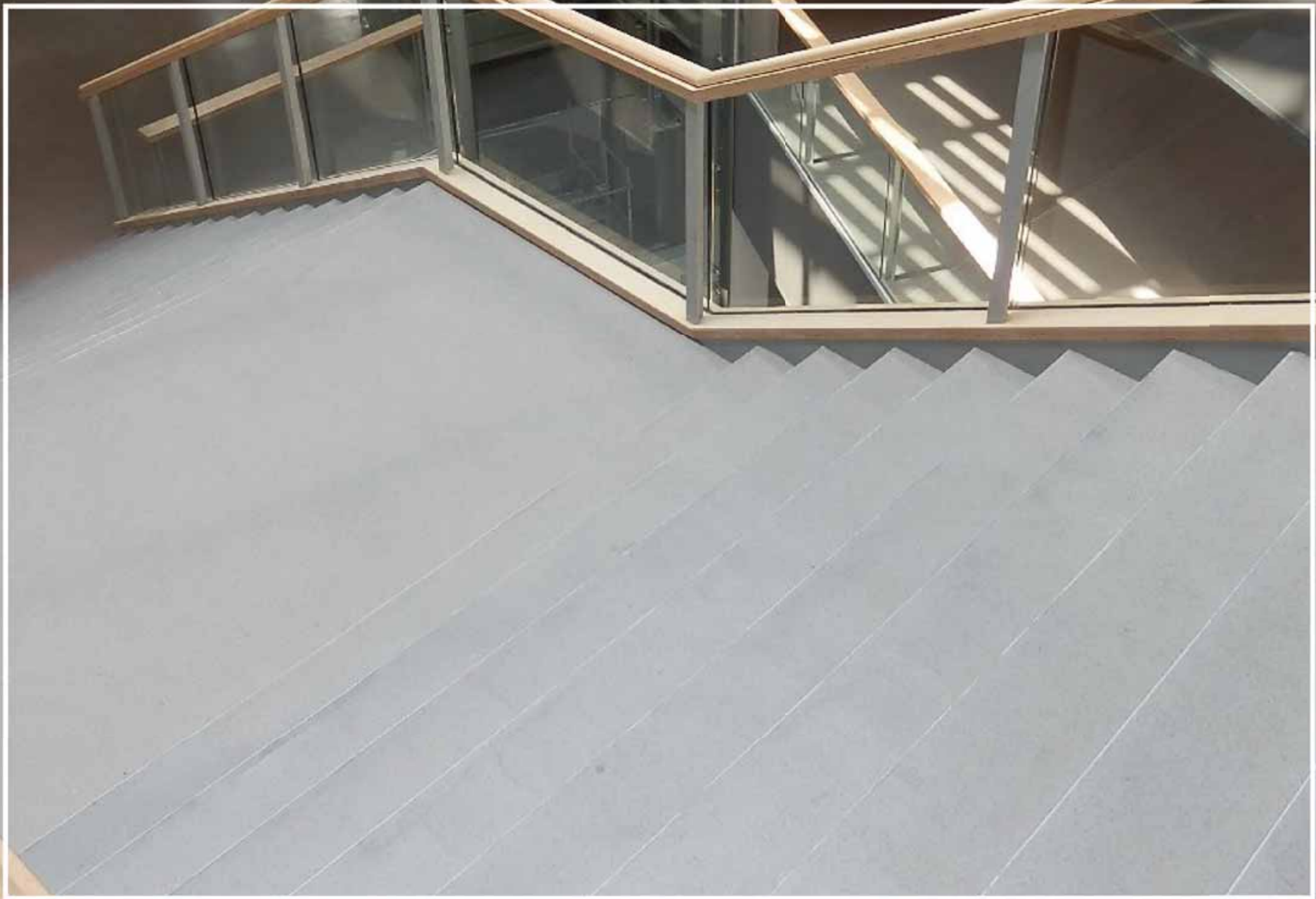
PRIMA



DOPO



PRIMA



DOPO

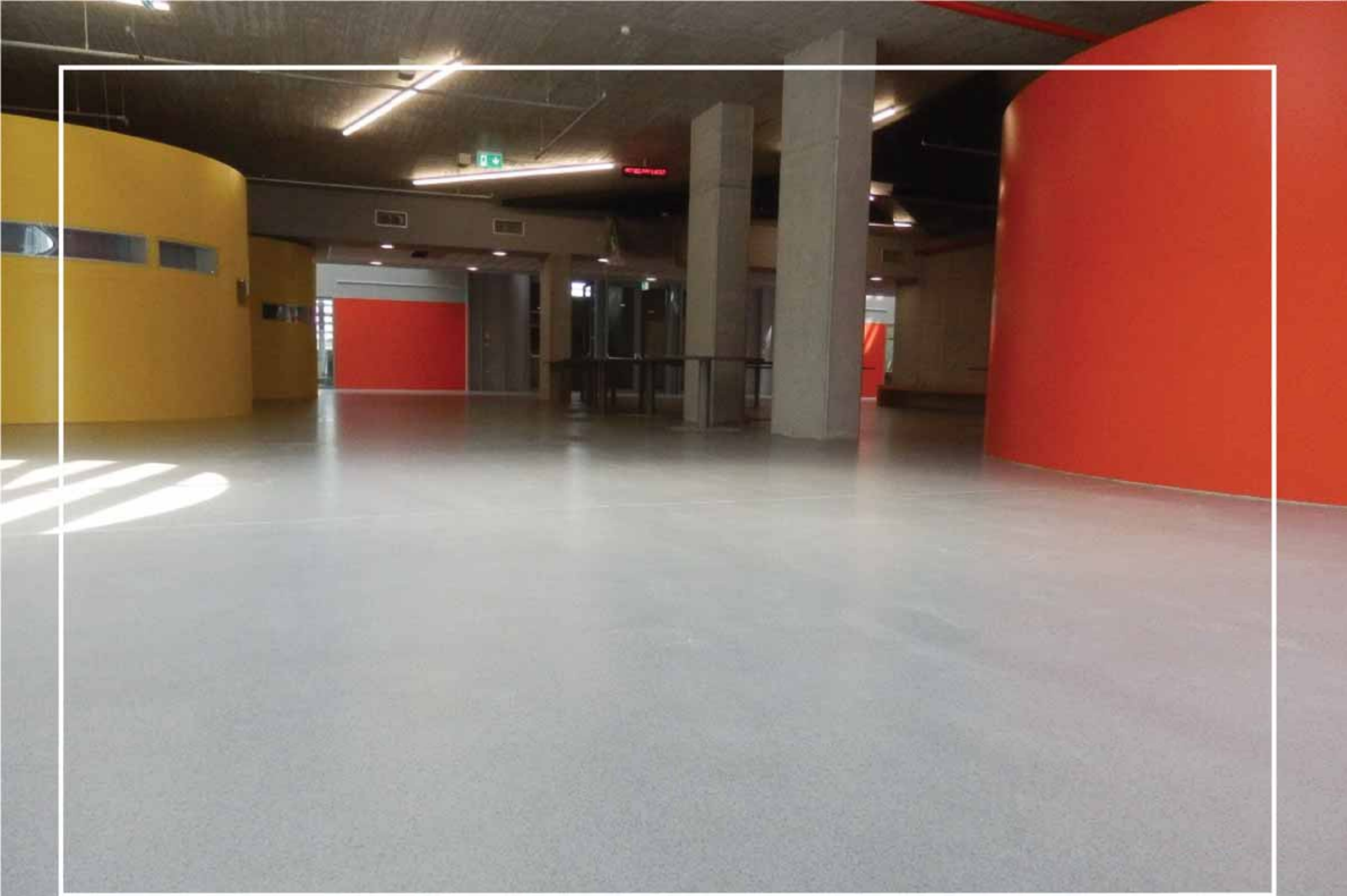




PRIMA



DOPO



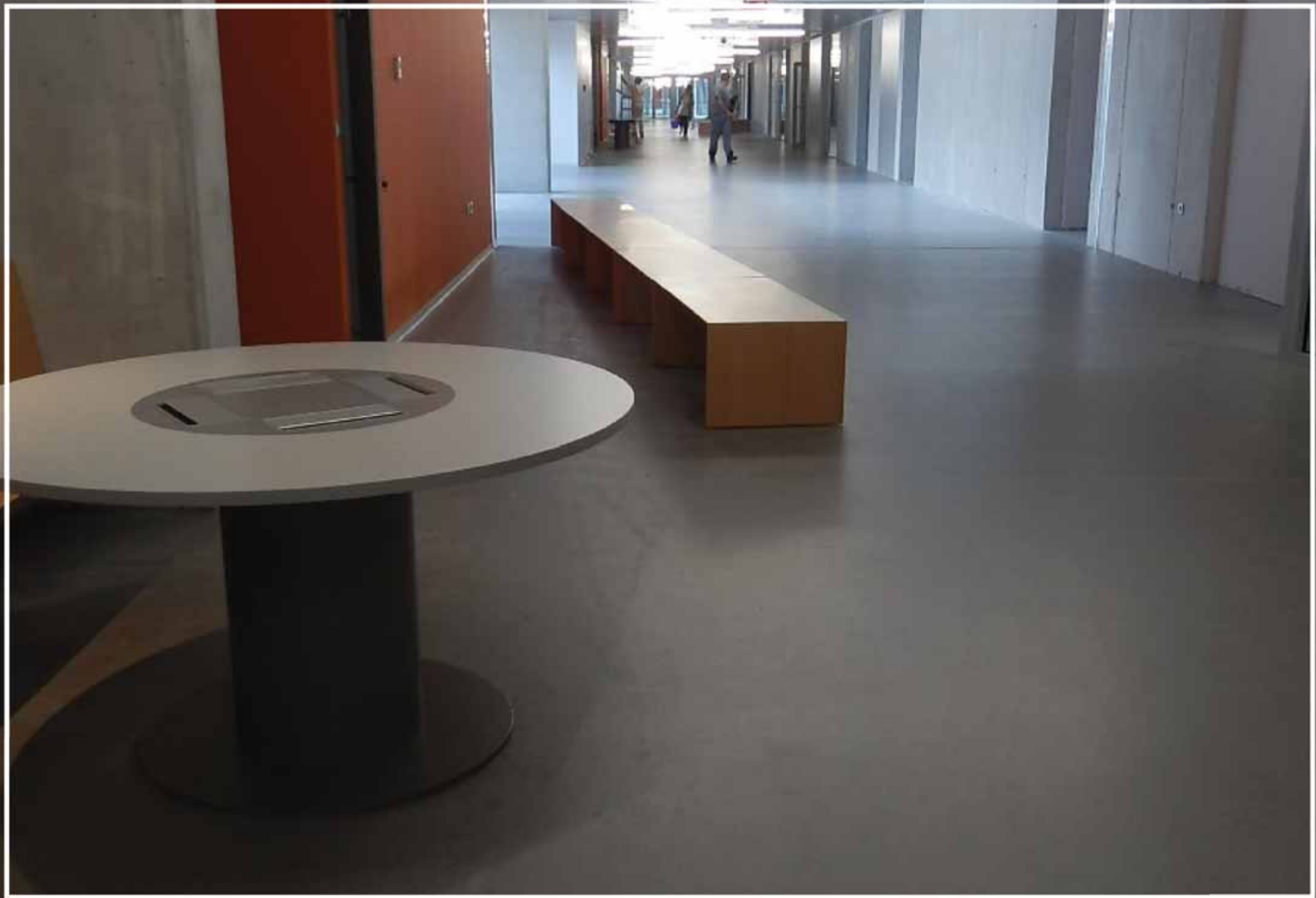
DOPO



DOPO



DOPO



A large, curved, orange wall dominates the left side of the frame. The floor is a smooth, grey material. To the right, there are large windows and a concrete wall. The lighting is bright, coming from the windows.

CICLO PAVAFLOOR 6:

PAVANATUR
SPESSORE 5 mm



PAVA RESINE



PAVA RESINE SRL



PAVARESINESRL

Pava[®]

PAVA RESINE SRL
Via Dolomiti 6/1
35018 San Martino di Lupari (PD)
tel. 049/5953085
info@pavaresine.it
www.pavaresine.